



PAIR OF 19TH CENTURY GILT BRONZE FRENCH CHENETS



\$1,600.00

SKU: 521-36 | **Stock:** N/A | **Categories:** [Accessories & Miscellaneous](#), [Mantels & Fireplace Accessories](#) |

Country Of Origin
In The Style Of
Age
Dimensions

France
Louis XV
Late 1800s
H-17 1/8, W-12, D-7 1/2

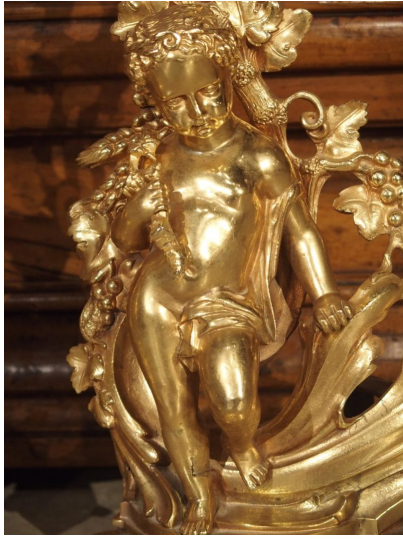
This is a stunning pair of French fireplace bronze doré chenets from the 1800's. Each chenet has a putto standing on a large cluster of curled acanthus leaves. Beneath the leaves are thick bases with cavetto molding adorned with a series of C-scrolls. Grapevines and wheat husks emanate upwards from the leaves, giving the chenets some additional height. One of the putti is pulling a grapevine over his shoulder, while the other one has a sickle in his hand.

French chenets were used in fireplaces to elevate the logs, allowing for optimal airflow into the fireplace. Of course, they also serve an important decorative function. Today, this pair of French gilt bronze chenets could once again be placed at the front of a fireplace. Alternatively, they could be repurposed into lamp bases or displayed as elegant accessories.

CONDITION: Very good. Original iron extension bars are missing and have been replaced with steel supports. Minor wear



MORE IMAGES



LE LOUVRE
FRENCH ANTIQUES