



LARGE 18TH CENTURY PAINTED TOLE, IRON AND WOOD TEN-LIGHT CHANDELIER FROM ITALY



\$8,800.00

SKU: 1021-92 | Stock: N/A | Categories: [Lighting](#) |

Country Of Origin

Italy

Age

1700's

Dimensions

H - 45 1/2, diameter - 52

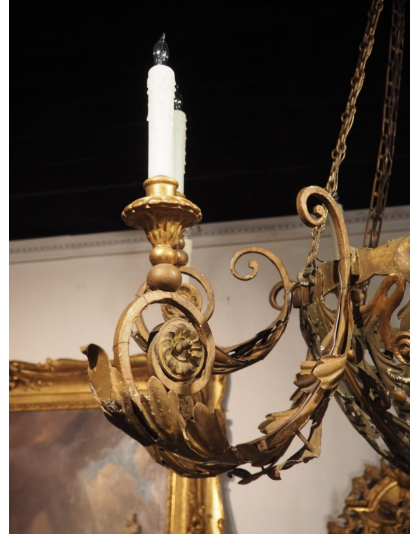
This sprawling Italian chandelier features a large open bowl adorned with parted leaf margents painted in olive green with gold highlights. The margents trail down to the bottom of the bowl, where they join a wooden rosette painted in gold. 10 foliate rinceaux arms of alternating length are attached to the top of the bowl. The underside of each arm is covered with painted foliate tole decor. Tole, a thin, often elaborately formed lacquered tin, was very popular throughout Italy during the 1700s. It was used in chandeliers and lanterns. At the end of each of the arms, there are wooden bobèches festooned with shallow gadrooning, while capitals with rolled edges hold long white candle sleeves.

From 18th century Italy, our large chandelier was hand-crafted from iron and wood with painted tole elements. Most of the chandelier has been painted an olive-green color with gold highlights along the arms and top of the bowl. At 52 inches in diameter, this chandelier would provide ample light and make a grand impression in a large area, such as a hallway or dining room.

CONDITION: Good antique condition with wear commensurate to age and use, including light separations and rubs. Minor losses. Please see photos for details. Recently professionally electrified for USA.



MORE IMAGES



LE LOUVRE FRENCH ANTIQUES