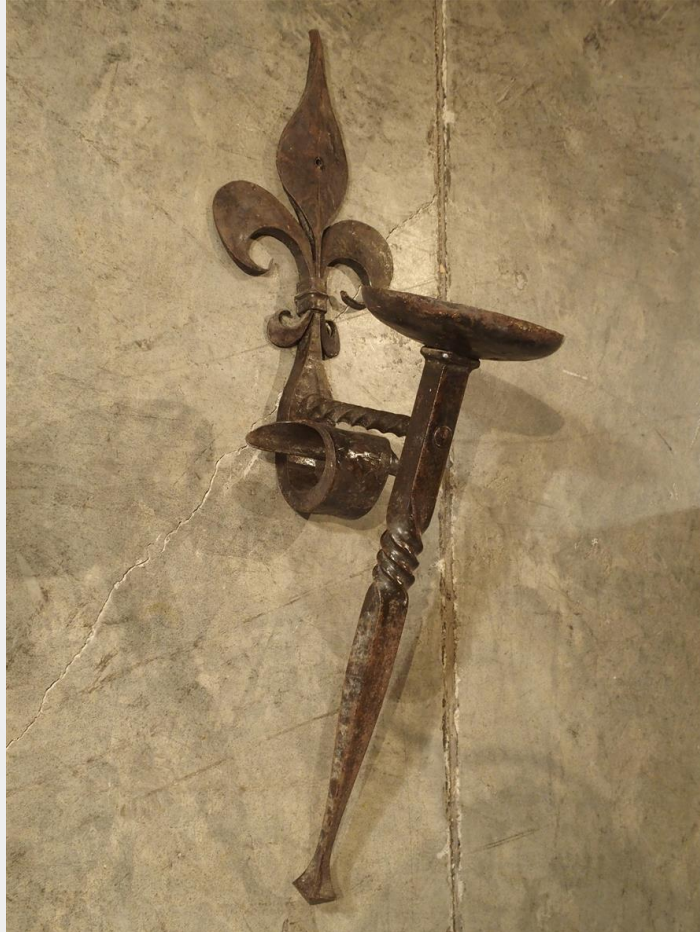




**ANTIQUE FORGED IRON FLEUR DE LYS TORCHERE SCONCE FROM FRANCE,
CIRCA 1900**



\$1,600.00

SKU: 318-45B | Stock: N/A | Categories: [Lighting](#) |

Country Of Origin

France

Age

Circa 1900

Dimensions

H=35 3/8, W=8 3/4, D=12 3/4

From France, this antique forged iron torchere style sconce has a large single fleur de lis at the top and a thick scroll at the bottom of it. The sconce's stem is at an angle, held to the backplate by a twisted iron bar. There is a flame style glass globe that fits into the top of this sconce that can be used or not used, depending upon your choice. Wired at one point



CONDITION: Losses to finish on the scone from abrasions and scratches. Contact us if you need assistance with wiring.





MORE IMAGES



LE LOUVRE
FRENCH ANTIQUES